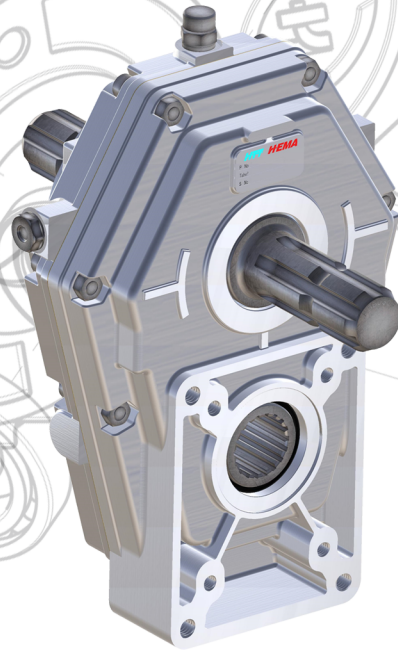
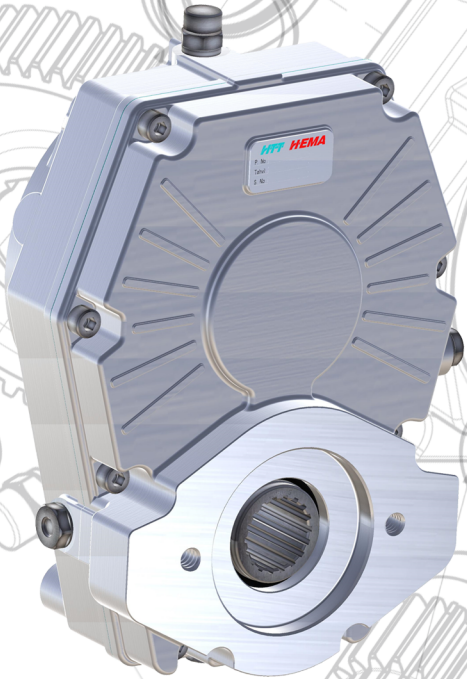
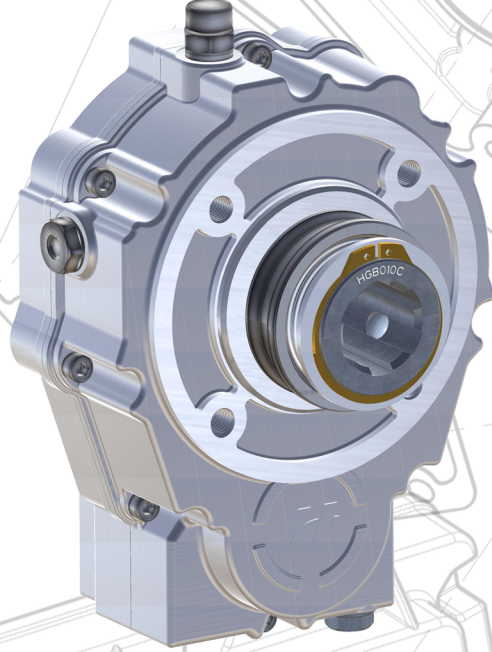
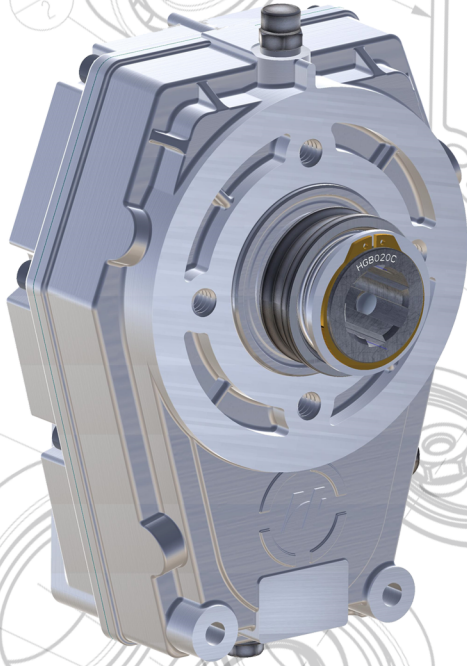
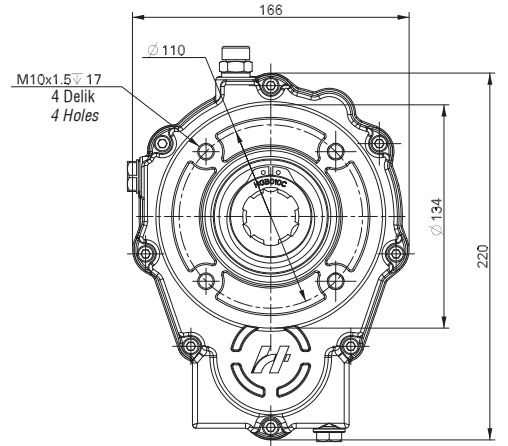
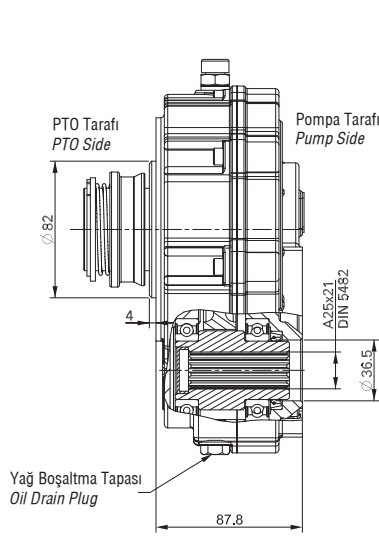
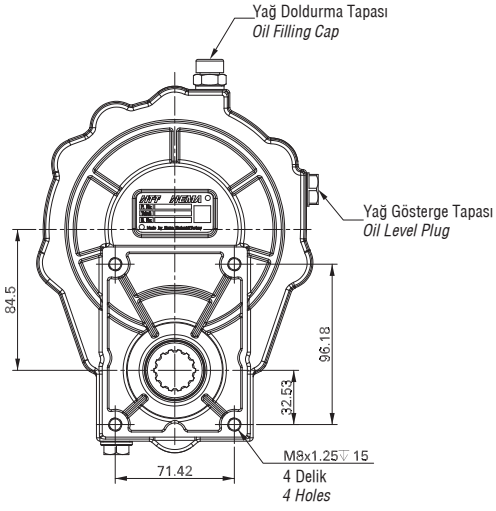


KUYRUK MİLİ DEVİR YÜKSELTİCİ DİŞLİ KUTULARI
P.T.O. SPEED INCREASER GEARBOXES

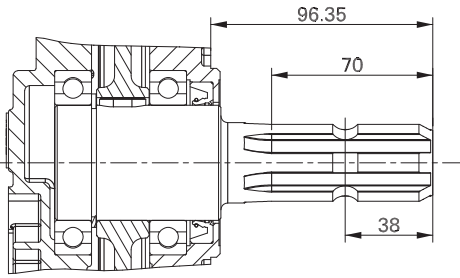


HGB010

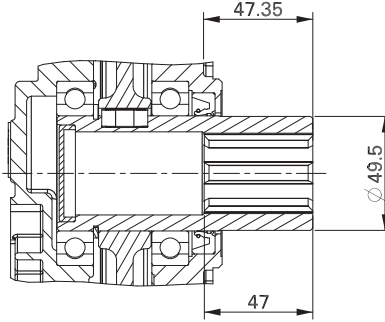
KUYRUK MİLİ DEVİR YÜKSELTİCİ DİŞLİ KUTULARI P.T.O. SPEED INCREASER GEARBOXES



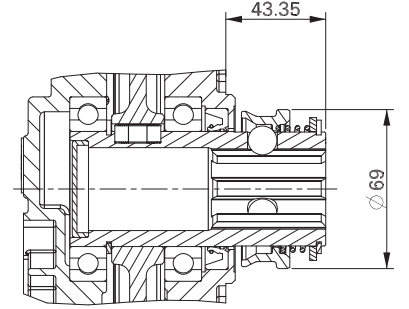
P.T.O. ŞAFT TIPLERİ / P.T.O. SHAFT TYPES



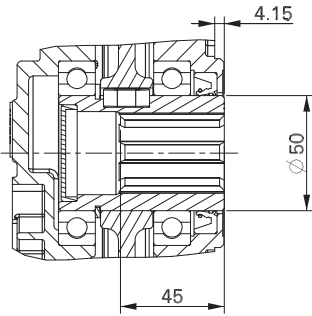
PTO TIPI A / PTO TYPE A



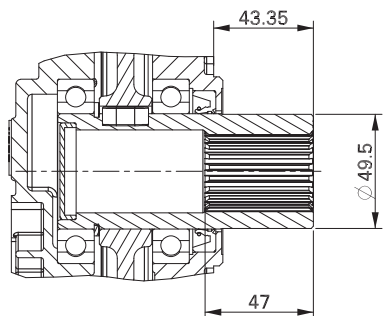
PTO TIPI B / PTO TYPE B



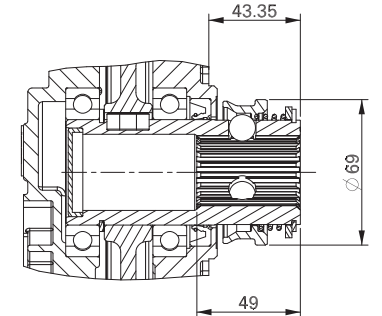
PTO TIPI C / PTO TYPE C



PTO TIPI L / PTO TYPE L

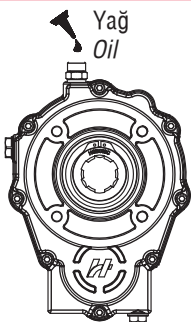


PTO TIPI P / PTO TYPE P

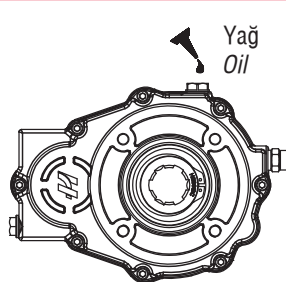


PTO TIPI R / PTO TYPE R

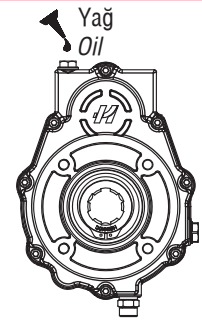
MONTAJ POZİSYONLARI / MOUNTING POSITIONS



Yağ Miktarı (lt): 0.2 Oil Quantity (lt):0.2



Yağ Miktarı (lt): 0.1 Oil Quantity (lt):0.1

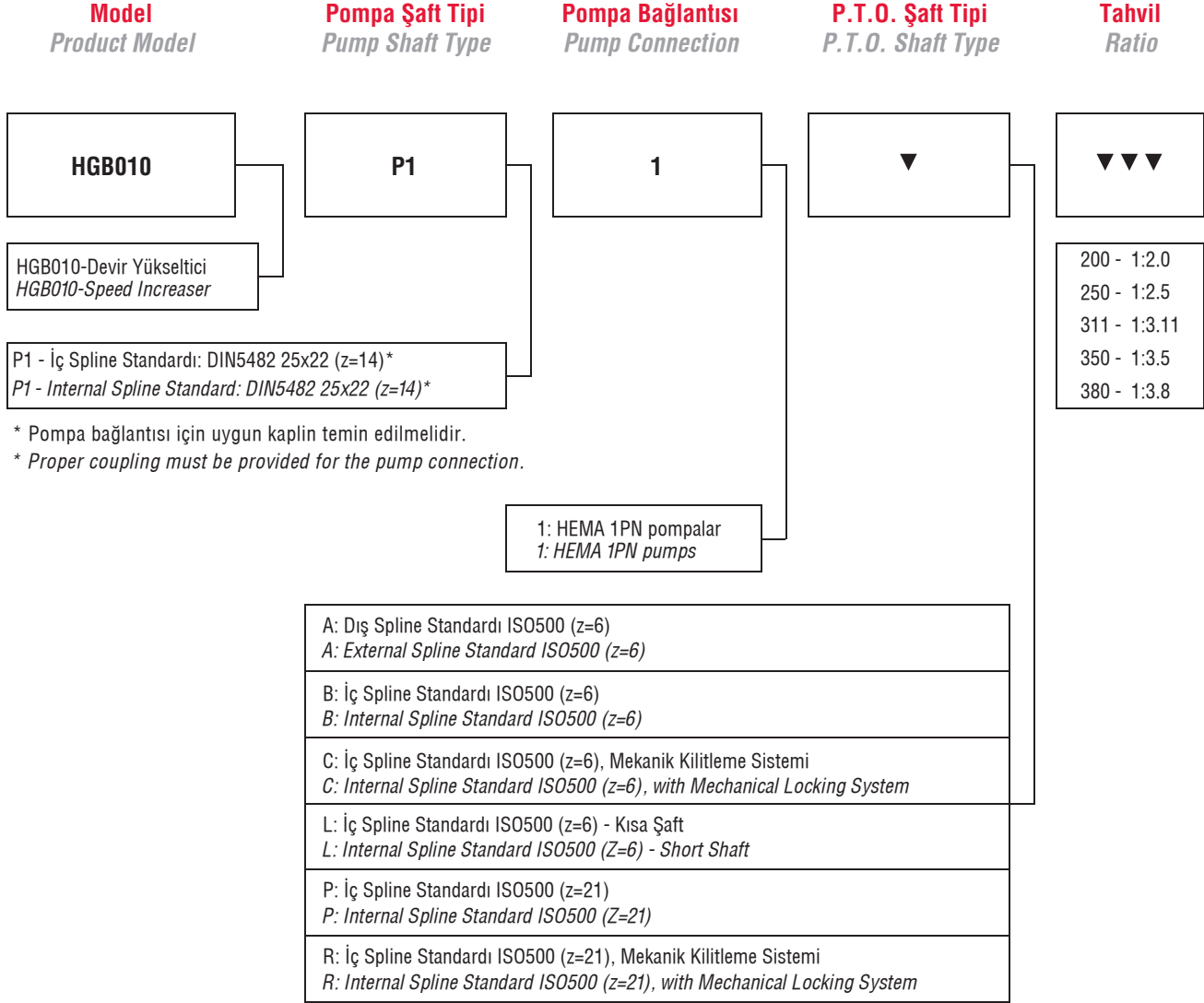


Yağ Miktarı (lt): 0.2 Oil Quantity (lt):0.2

HGB010

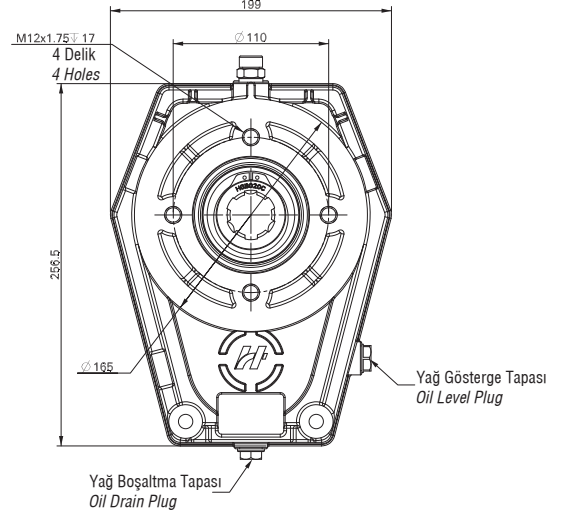
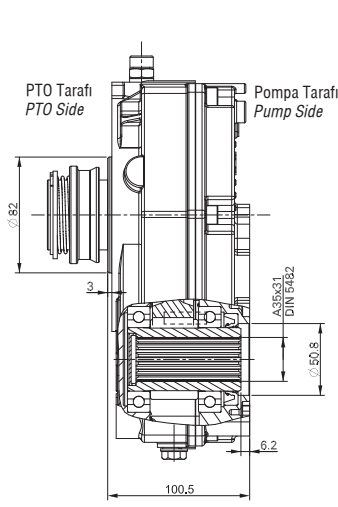
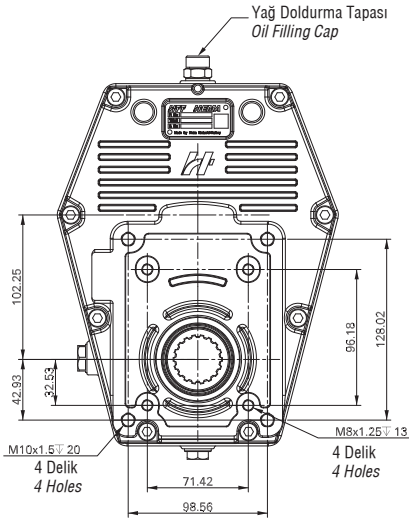
KUYRUK MİLİ DEVİR YÜKSELTİCİ DİŞLİ KUTULARI P.T.O. SPEED INCREASER GEARBOXES

SİPARİŞ KODU / ORDERING CODE

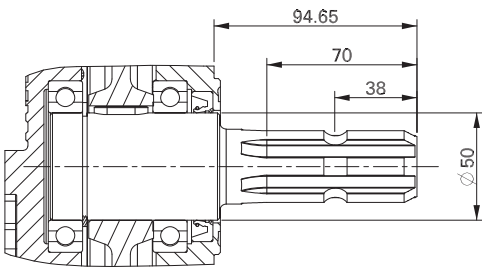


HGB020

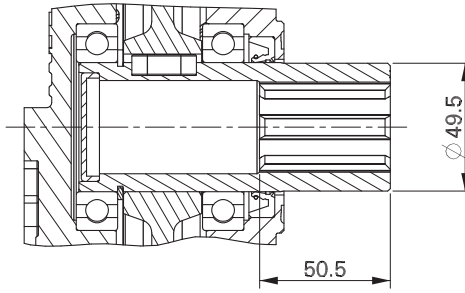
KUYRUK MİLİ DEVİR YÜKSELTİCİ DİŞLİ KUTULARI P.T.O. SPEED INCREASER GEARBOXES



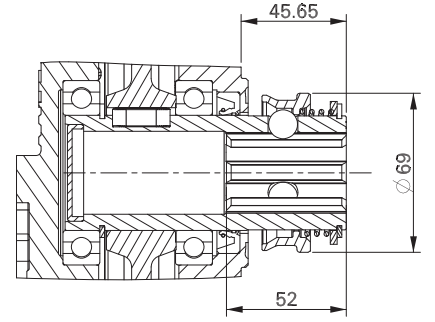
P.T.O. ŞAFT TİPLERİ / P.T.O. SHAFT TYPES



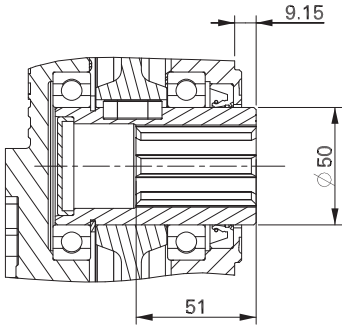
PTO TIPI A / PTO TYPE A



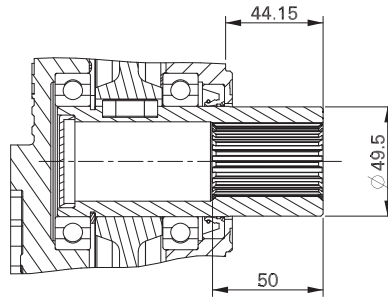
PTO TIPI B / PTO TYPE B



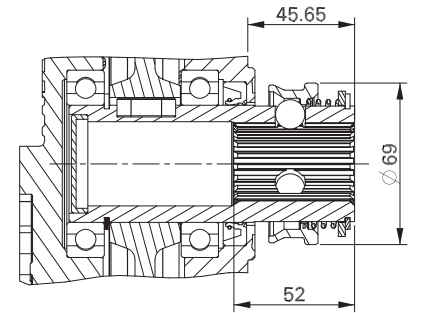
PTO TIPI C / PTO TYPE C



PTO TIPI L / PTO TYPE L

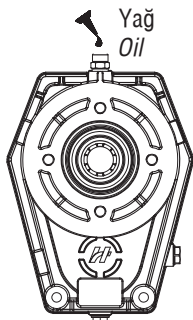


PTO TIPI P / PTO TYPE P

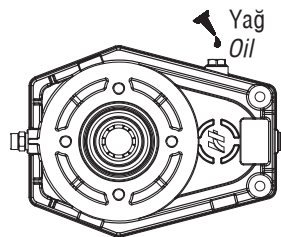


PTO TIPI R / PTO TYPE R

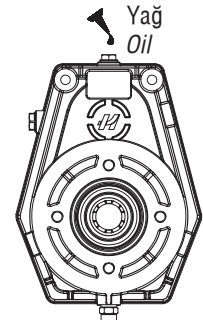
MONTAJ POZİSYONLARI / MOUNTING POSITIONS



Yağ Miktarı (lt): 0.3 Oil Quantity (lt):0.3



Yağ Miktarı (lt): 0.8 Oil Quantity (lt):0.8

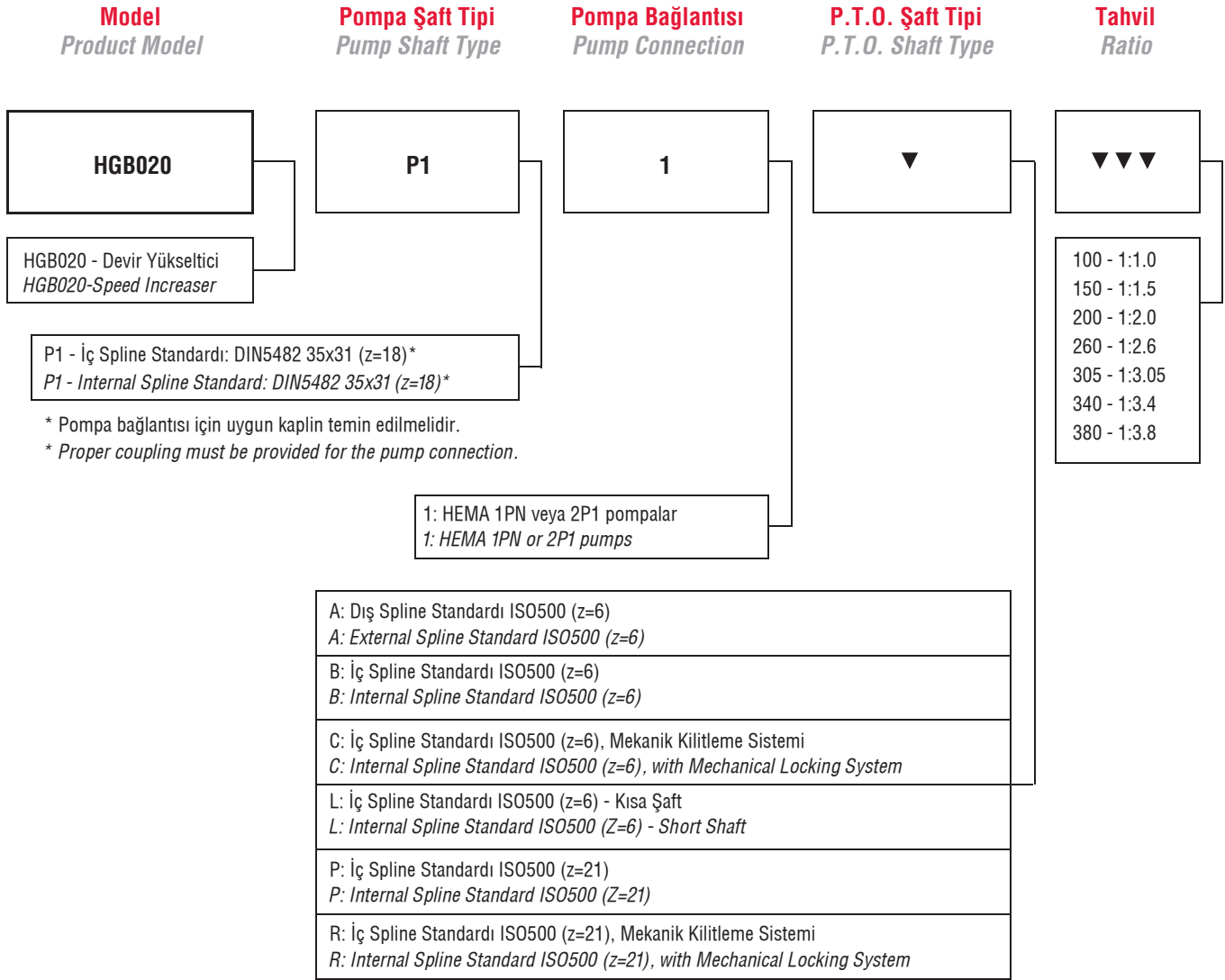


Yağ Miktarı (lt): 0.6 Oil Quantity (lt):0.6

HGB020

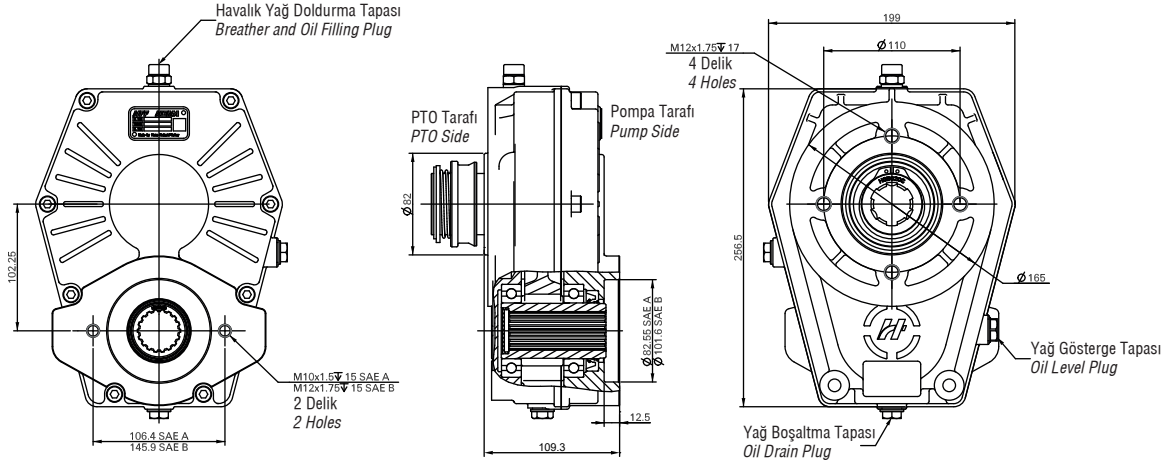
KUYRUK MİLİ DEVİR YÜKSELTİCİ DİŞLİ KUTULARI P.T.O. SPEED INCREASER GEARBOXES

SİPARİŞ KODU / ORDERING CODE

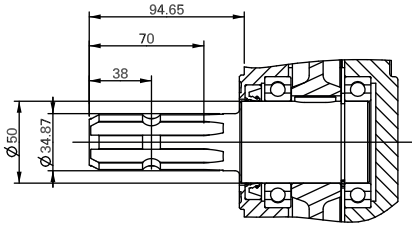


HGB025

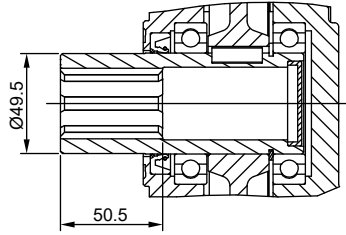
KUYRUK MİLİ DEVİR YÜKSELTİCİ DİŞLİ KUTULARI P.T.O. SPEED INCREASER GEARBOXES



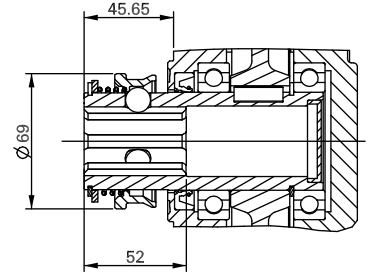
P.T.O. ŞAFT TIPLERİ / P.T.O. SHAFT TYPES



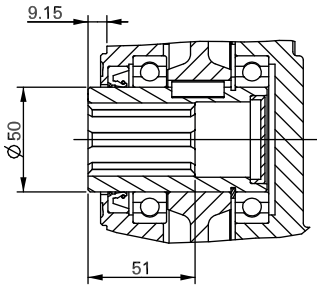
PTO TIPI A / PTO TYPE A



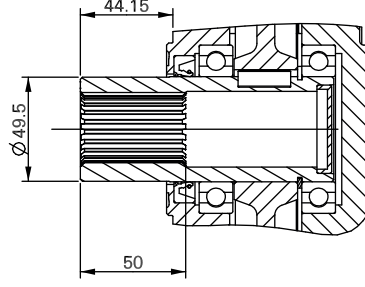
PTO TIPI B / PTO TYPE B



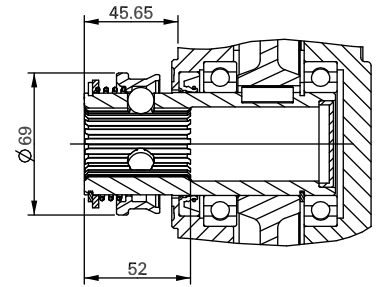
PTO TIPI C / PTO TYPE C



PTO TIPI L / PTO TYPE L

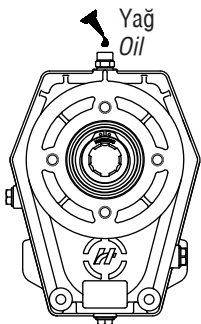


PTO TIPI P / PTO TYPE P

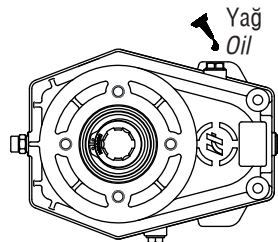


PTO TIPI R / PTO TYPE R

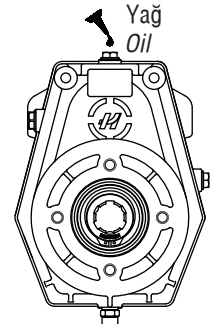
MONTAJ POZİSYONLARI / MOUNTING POSITIONS



Yağ Miktarı (lt): 0.3 Oil Quantity (lt):0.3



Yağ Miktarı (lt): 0.8 Oil Quantity (lt):0.8

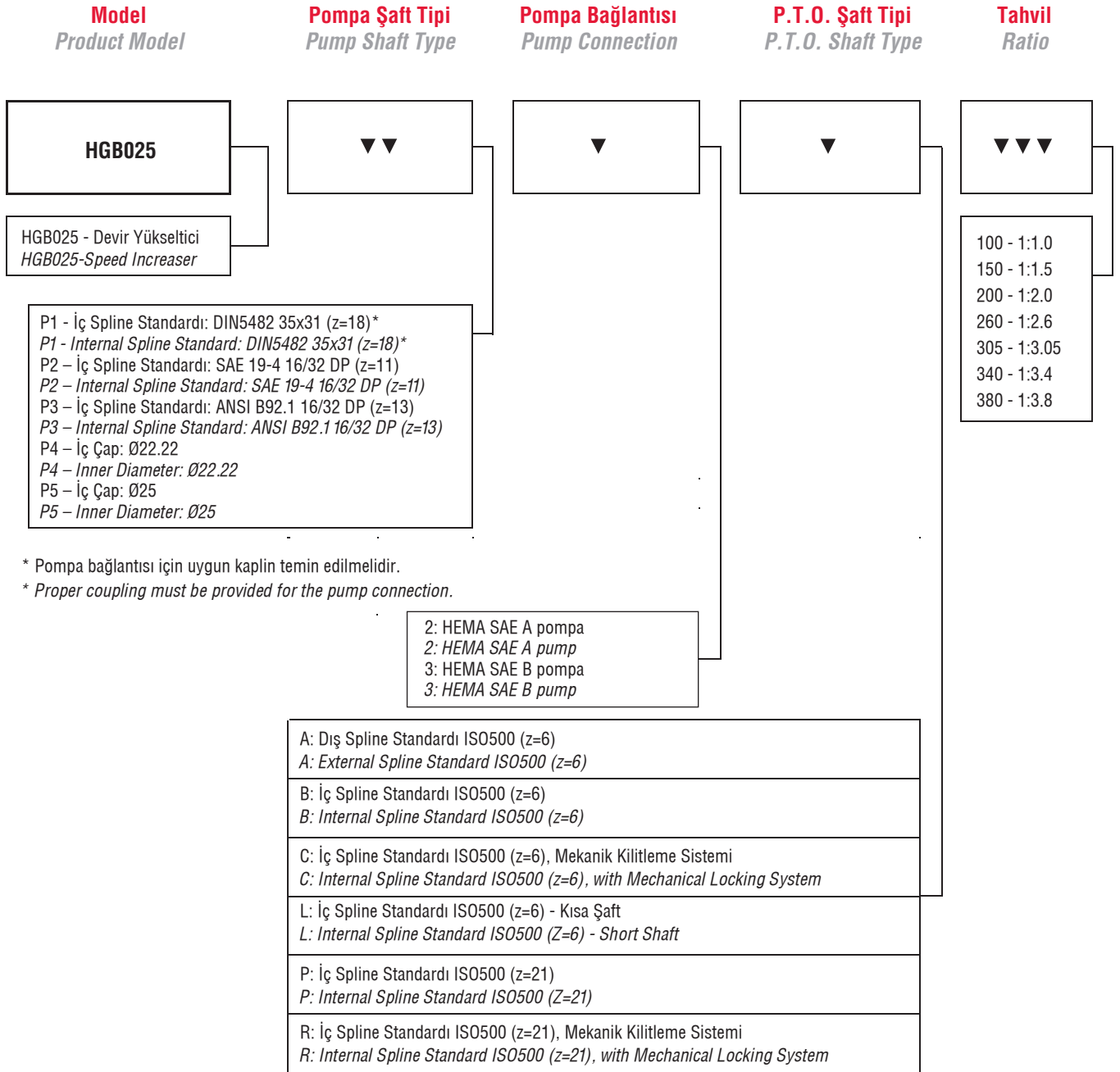


Yağ Miktarı (lt): 0.6 Oil Quantity (lt):0.6

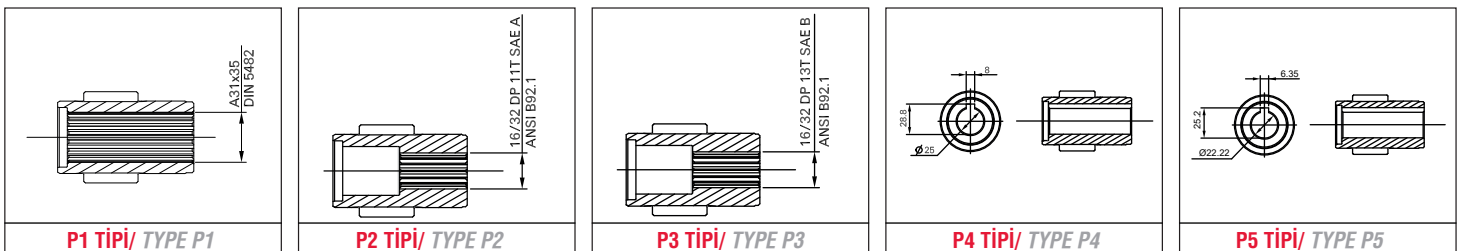
HGB025

KUYRUK MİLİ DEVİR YÜKSELTİCİ DİŞLİ KUTULARI P.T.O. SPEED INCREASER GEARBOXES

SİPARİŞ KODU / ORDERING CODE

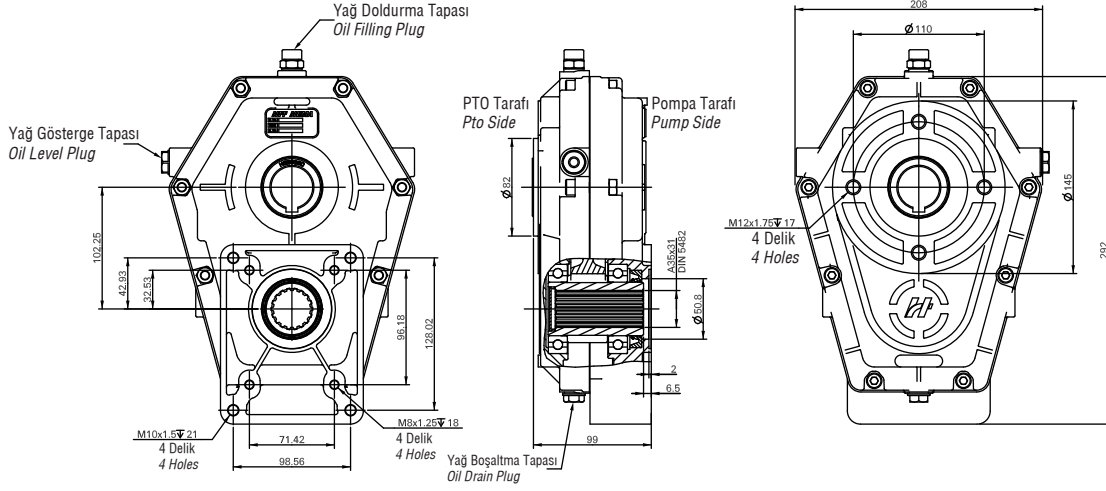


POMPA ŞAFT TİPLERİ / PUMP SHAFT TYPES

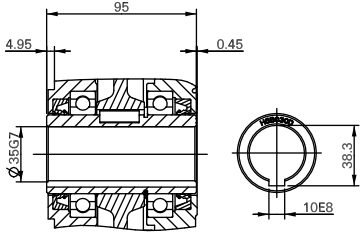


HGB030

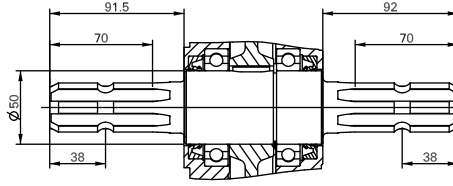
KUYRUK MİLİ DEVİR YÜKSELTİCİ DİŞLİ KUTULARI P.T.O. SPEED INCREASER GEARBOXES



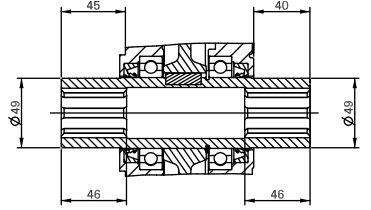
P.T.O. ŞAFT TİPLERİ / P.T.O. SHAFT TYPES



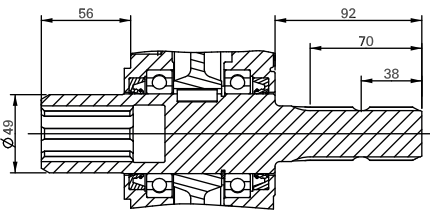
PTO TİPİ D / PTO TYPE D



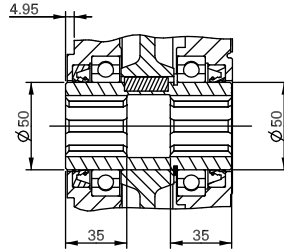
PTO TİPİ F / PTO TYPE F



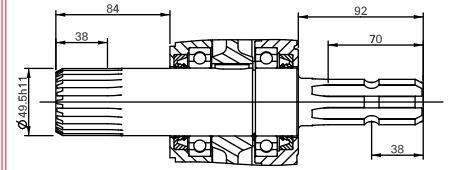
PTO TİPİ G / PTO TYPE G



PTO TİPİ H / PTO TYPE H

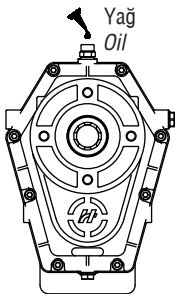


PTO TİPİ M / PTO TYPE M

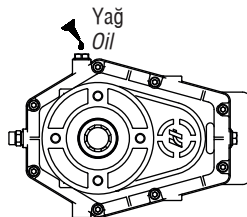


PTO TİPİ V / PTO TYPE V

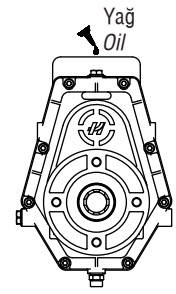
MONTAJ POZİSYONLARI / MOUNTING POSITIONS



Yağ Miktarı (lt): 0.3 Oil Quantity (lt):0.3



Yağ Miktarı (lt): 0.8 Oil Quantity (lt):0.8

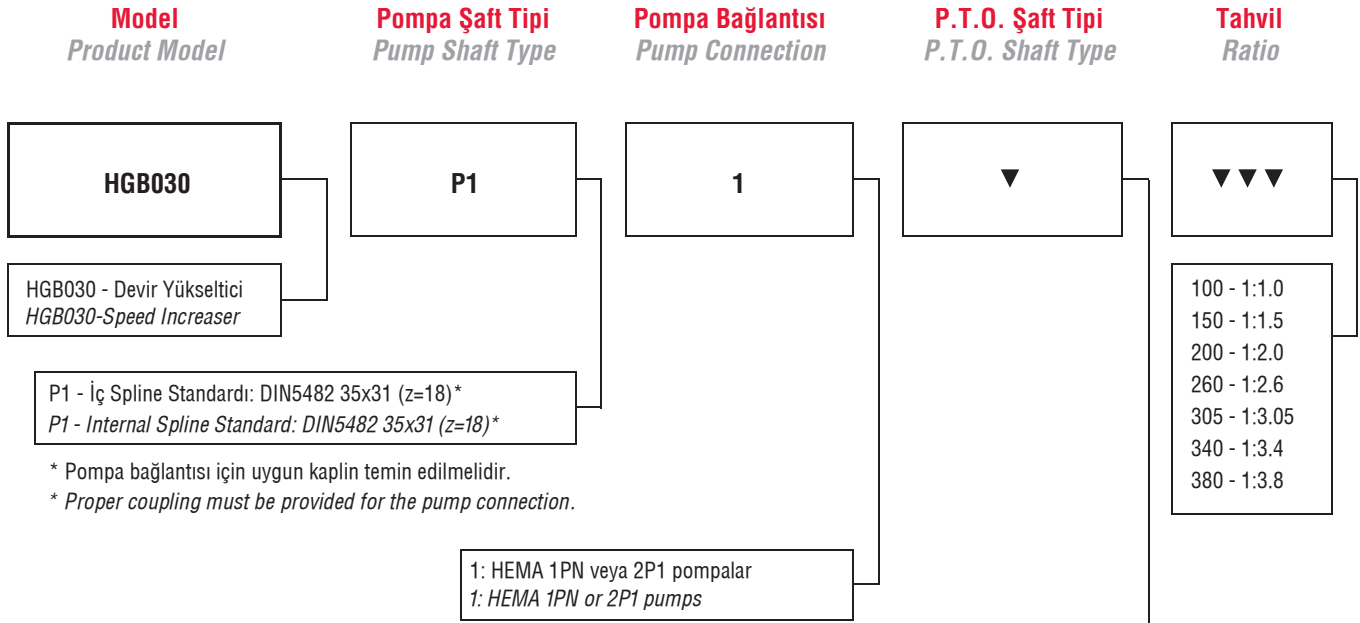


Yağ Miktarı (lt): 0.6 Oil Quantity (lt):0.6

HGB030

KUYRUK MİLİ DEVİR YÜKSELTİCİ DİŞLİ KUTULARI P.T.O. SPEED INCREASER GEARBOXES

SİPARİŞ KODU / ORDERING CODE



D: İç Çap: Ø35 D: Inner Diameter: Ø35
F: Dış Spline Standardı ISO500 (z=6), Dış Spline Standardı ISO500 (Z=6) F: External Spline Standard ISO500 (z=6), External Spline Standard ISO500 (Z=6)
G: İç Spline Standardı ISO500 (z=6), İç Spline Standardı ISO500 (Z=6) G: Internal Spline Standard ISO500 (z=6), Internal Spline Standard ISO500 (Z=6)
H: İç Spline Standardı ISO500 (z=6), Dış Spline Standardı ISO500 (Z=6) H: Internal Spline Standard ISO500 (z=6), External Spline Standard ISO500 (Z=6)
M: İç Spline Standardı ISO500 (z=6) - Kısa Mil, İç Spline Standardı ISO500 (z=6) - Kısa Mil M: Internal Spline Standard ISO500 (z=6) - Short Shaft, Internal Spline Standard ISO500 (z=6) - Short Shaft
V: Dış Spline Standardı DIN5482 B50x45 (z=24), Dış Spline Standardı ISO500 (z=6) V: External Spline Standard DIN5482 B50x45 (z=24), External Spline Standard ISO500 (z=6)

HEMA ENDÜSTRİ ÜRÜNLER

HEMA ENDUSTRI PRODUCTS

Hidrolik Ürünler

- Hidrolik Dişli Pompa
- Hidrolik Dişli Motor
- Pistonlu Pompa
- Orbit Motor
- Yön Kontrol Valfi
- Transmisyon Valfi
- Hidrolik Kaldırıcı
- Yağlama Pompası



Aktarma Organları

- Transaks
- Transmisyon
- Diferansiyel Montajı
- Arka Aks
- Ön Aks
- Ayna Mahruti
- Various Gears & Shafts
- Çeşitli Dişliler ve Miller
- Devir yükselticiler



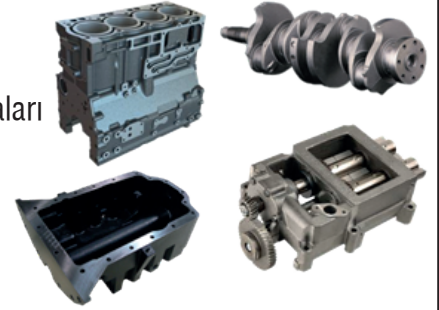
Direksiyon Sistemleri

- Ticari Araç Hidrolik Direksiyonu
- Paletli Pompa
- Pitman Kolu
- Yağ Tankı
- Hidrolik Direksiyon Silindiri
- Açılı Dişli Kutusu



Motor Üniteleri

- Kranklar
- Motor Blokları
- Motor Yağlama Pompaları
- Yağ Karterleri
- Balanserler
- Zaman Dişlileri



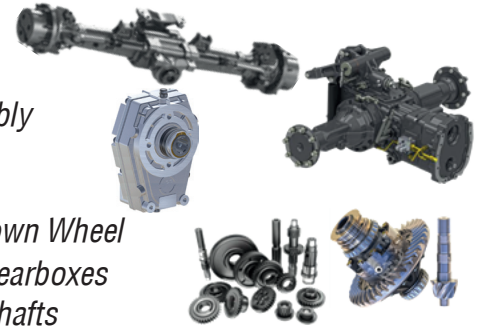
Hydraulic Products

- Hydraulic Gear Pumps
- Hydraulic Gear Motors
- Piston Pumps
- Orbital Motors
- Directional Control Valves
- Transmission Valves
- Hydraulic Tractor Lifts
- Transmission Oil Pumps



Drivetrain Products

- Transaxles
- Transmissions
- Differential Assembly
- Rear Axles
- Front Axles
- Bevel Pinion & Crown Wheel
- Speed Increaser Gearboxes
- Various Gears & Shafts



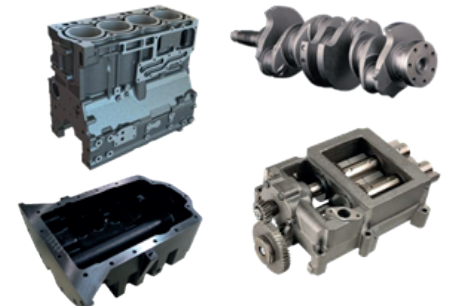
Steering Systems

- Hydraulic Steering Gears for Heavy and Medium Commercial Vehicles
- Vane Pumps
- Pitman Arms
- Oil Tanks
- Hydraulic Steering Cylinders
- Bevel Boxes



Engine Units

- Crankshafts
- Engine Blocks
- Engine Oil Pumps
- Oil Sumps
- Balancer Units
- Timing Gears



A series of horizontal dashed lines for writing notes.

ABOUT US

HEMA was established in 1973 under the name of “Hema Hidrolik Makine Sanayi ve Ticaret A.S” located in the Cerkezkoy Industrial Zone in the Tekirdag region to produce external gear pumps for Turkish Industries needs. Over the years HEMA Endüstri has extended product range and industries it serves. Today as one of the leading engineering and manufacturing companies in Turkey, supplies systems and components to automotive, agricultural and construction equipment OEMs with additional divisions serving the mining,

In 1998 the company name was changed to HEMA Endüstri A.S. to reflect the breadth of the company activities. Competing with leading manufacturers of the world, Hema continuously aims new technological capabilities in order to improve its product quality and efficiency. Giving particular importance to quality and customer satisfaction, Hema has over the years become a major OEM supplier in the industries that it serves.

Hema owns well-trained, qualified and experienced 3000 strong workforce which fuels its growth and achievements



Plant in Turkey

Hema Endustri A.S.
G.O.P Mah. (OSB) 4. Cadde No:5
59500 Cerkezkoy/Tekirdag/Turkey
Tel : +90 (282) 758 1040
Fax : +90 (282) 758 1091
Email : marketing@hattat.com.tr

Head Office in Turkey

Buyukdere Cad. No:235 34398
Maslak/Istanbul/Turkey
Tel : +90 212 285 2240
Fax : +90 212 286 4455

Plant in India

Hema Driveline & Hydraulics Pvt. Ltd.
Plot No: PAP V-103/5 MIDC Phase II
Chakan Industrial Area Wasuli
Chakan / Pune 410501
Tel : +91 213 569 0046
Fax : +91 213 569 99 47

U.S.A. Office

Hema Driveline and Hydraulics Inc.
901 Mittel Drive
Wood Dale, IL 60191 USA
Tel : +1 (847) 737 1862
Fax : +1 (847) 430 4803
Email : hemausa@hattat.com.tr

Office in China

Hema Endustri A.S.
No: 1786 Jiangnan Road Binjiang
District Hangzhou China
Tel: +86 0571 88056906